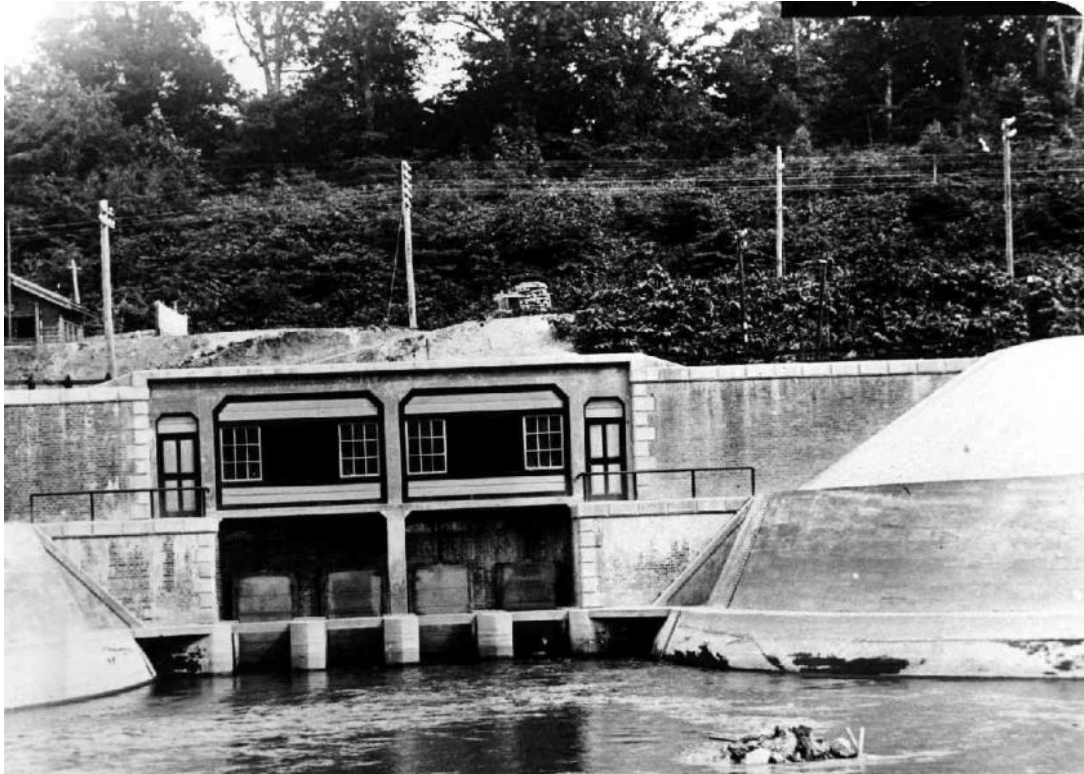


History of Shinryu head works and head race

1. Water conveyance gate of intake was completed
(opened on April 10, 1927).



2. Foundation work status of a water conveyance gate
(around October 1924)



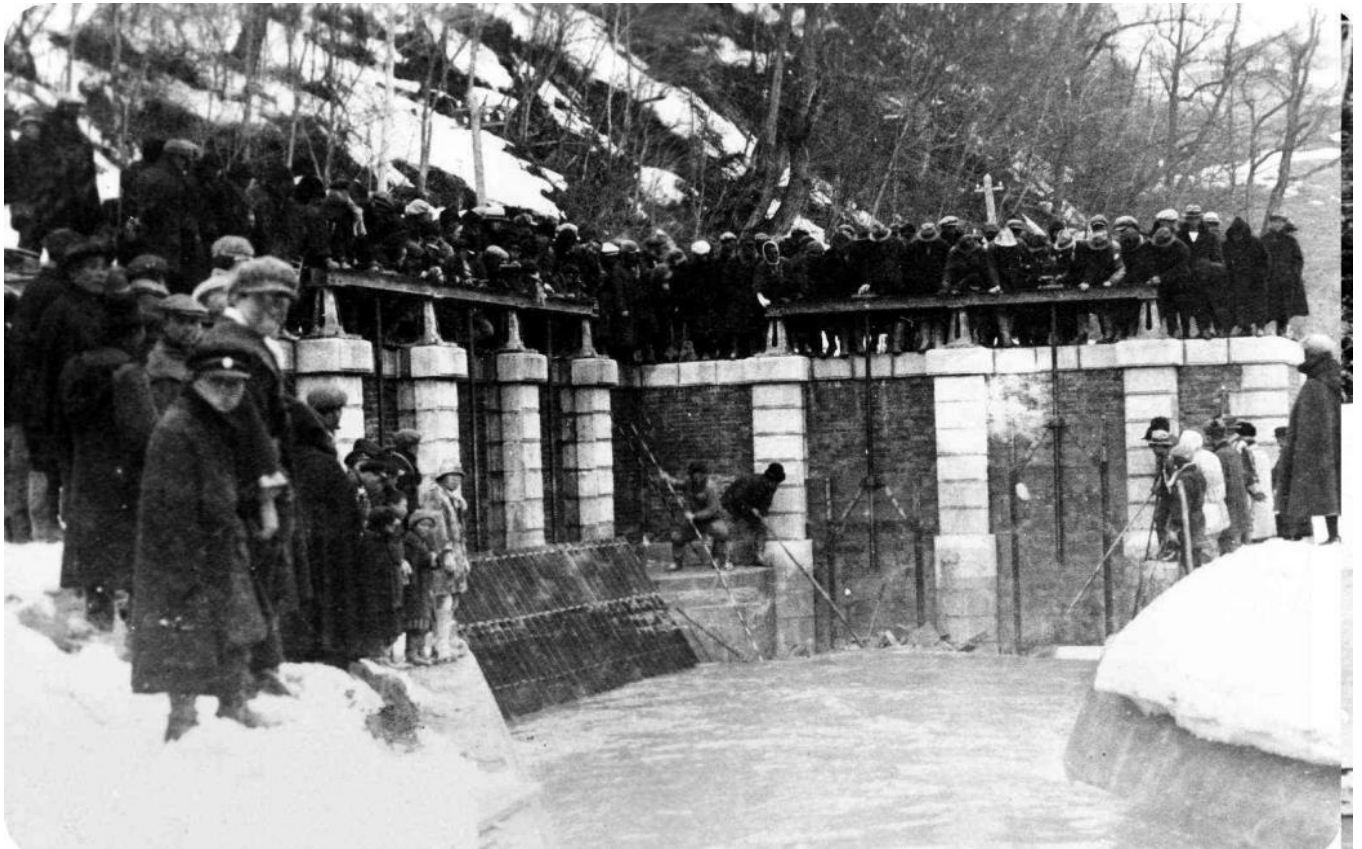
3. Tunnel construction
(1925)



4. Completed irrigation canal near the former Kotanso (around 1926)



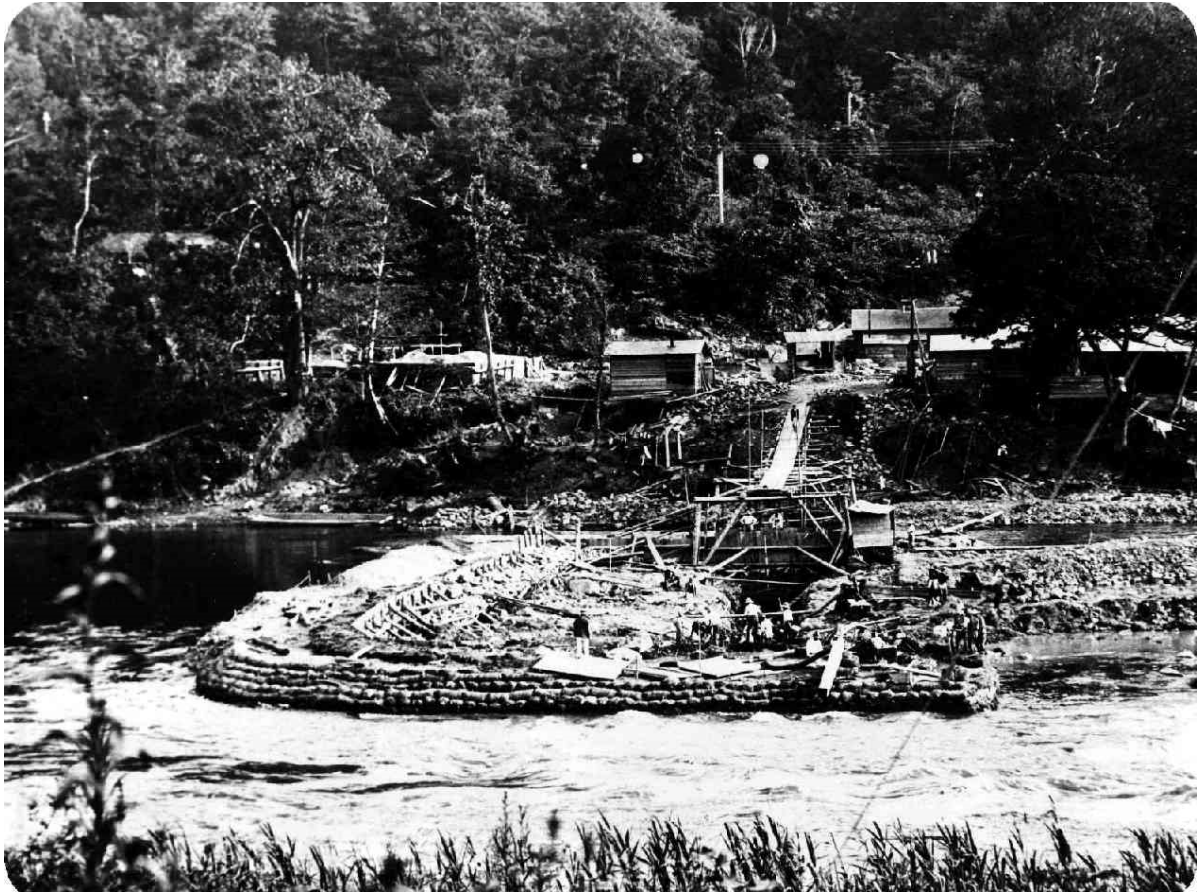
5. Regulating gate of intake (opened on April 10, 1927)



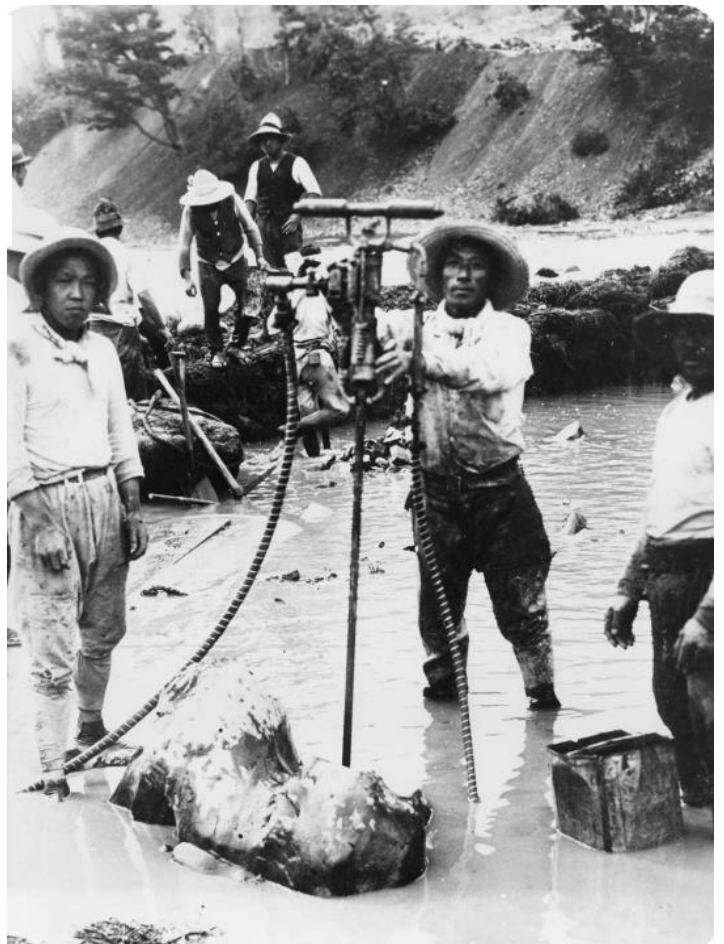
6. The Shinryu Bridge to transport materials was completed (March 8, 1924).
(The suspension bridge in front on the photo was originally used.)



7. Work on curved pipe cofferdam (Ishikari River siphon) (around 1925)



8. American-made rock drills that were used for curved pipe work (around 1925)



9. Curved pipe work (At that time, around 1925, shovels and bars were used.)



10. Recovery work after 1941 floods and overflows were completed (around July 1943).

