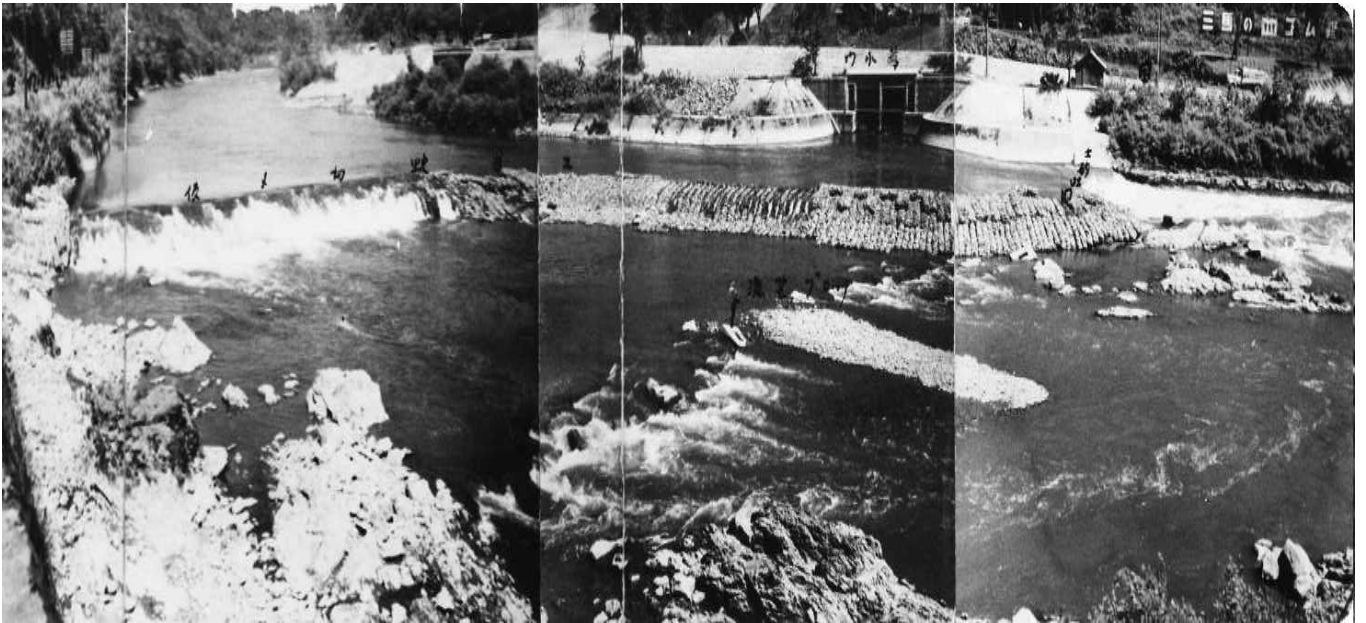


11. Recovery work after 1941 floods and overflows were completed
(July 1943).

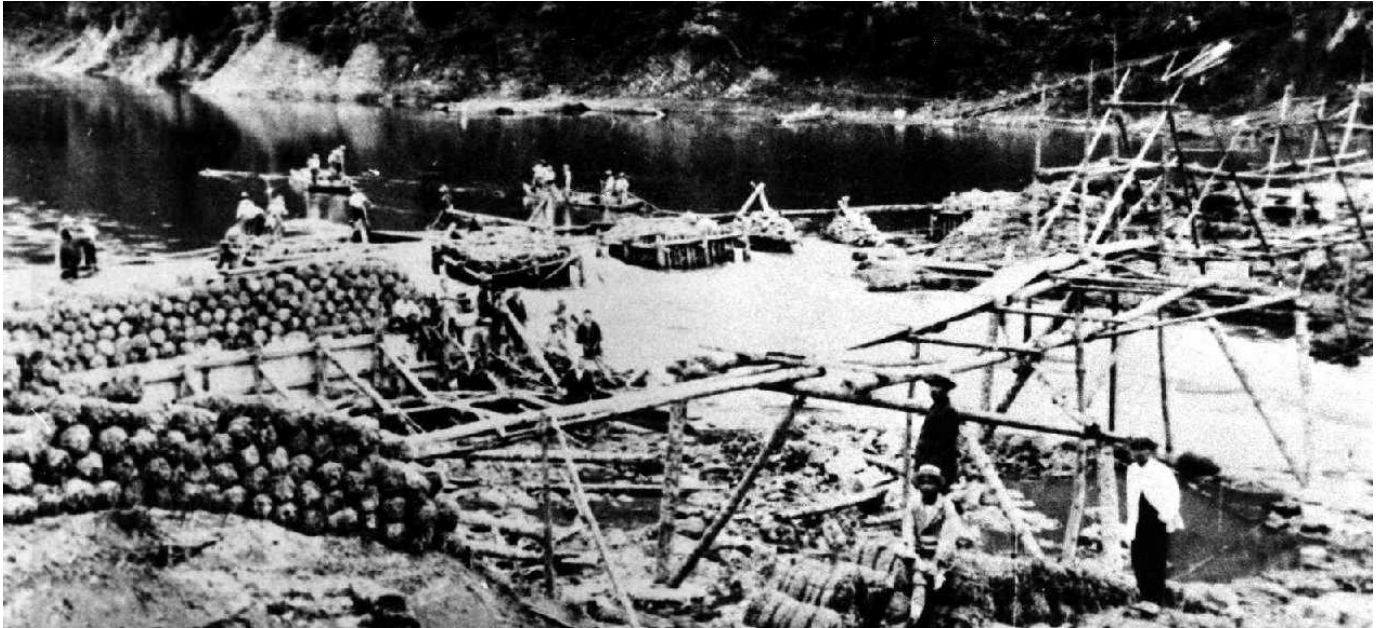
Wire cylinder weir and water conveyance gate



12. Drought control work at the water conveyance gate: cofferdam
(around July 1930)



13. Drought control work at the water conveyance gate: cofferdam
(around July 1930)



14. Shinryu head works were completed (1961).
2 flushing gates, a spillway, 3 tilting gates and 2 intake gates



15. Concrete placement of Shinryu headwork pier (1960 - 1961)
(for a spillway and flushing)



16. Government-operated irrigation and drainage project:
A settling basin was completed in the Shinryu district (1958).



17. Repair work on Sui-jingu (shrine) and the monument (1962)
The monument was erected in 1927.



18. Unveiling ceremony on completion of the government-operated irrigation and drainage project (1962)



19. Temporary bridge erection for construction works (1978)

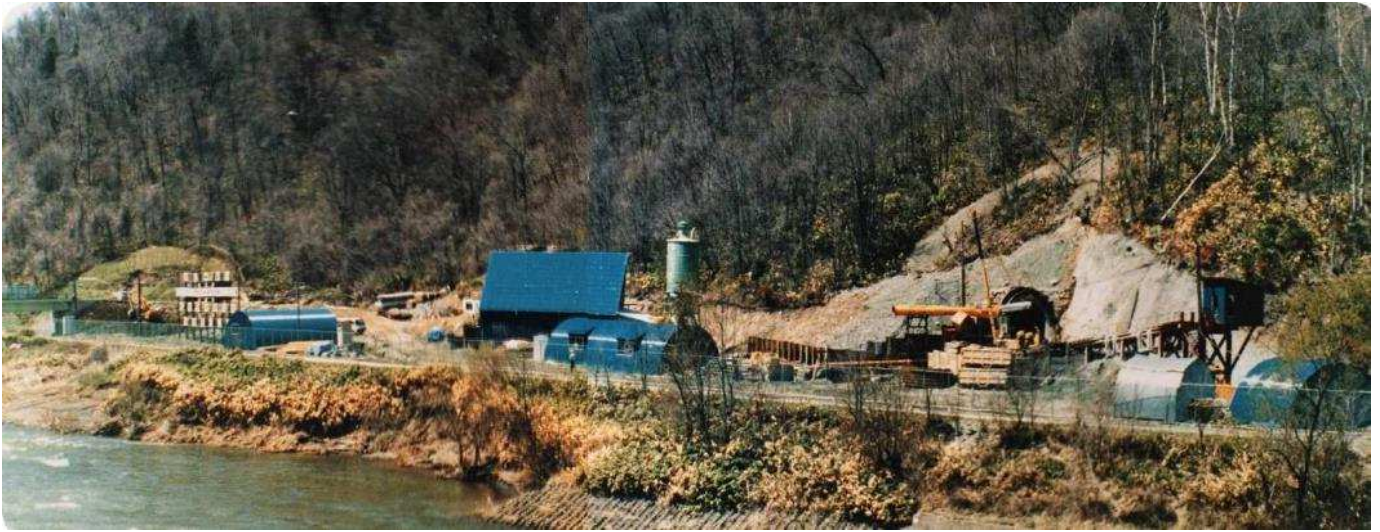


20. The current headrace tunnel construction (outfall, 1978)

The horseshoe-shaped tunnel is 3.8 meters high and wide.



21. A ready-mixed concrete plant was built for concrete placement. (1978)
It was used for tunnel constructions and head works.



22. Headrace tunnel work (intake, 1979)



23. New pier of head works with the former head works in the back (1985).



24. Current Shinryu head works (completed in 1986)

